

A585 Windy Harbour to Skippool Improvement Scheme

TR010035

2.10 Hedgerows and Protected Trees to be Removed Plans

APFP Regulation 5(2)(o)

Planning Act 2008

Infrastructure Planning (Applications: Prescribed
Forms and Procedure) Regulations 2009

Volume 2

October 2018

Infrastructure Planning

Planning Act 2008

The Infrastructure Planning
(Applications: Prescribed Forms and
Procedure) Regulations 2009

**A585 Windy Harbour to Skippool
Improvement Scheme**
Development Consent Order 201[]

HEDGEROWS AND PROTECTED TREES TO BE REMOVED PLANS

Regulation Number:	Regulation 5(2)(o)
Planning Inspectorate Scheme Reference	TR010035
Application Document Reference	TR010035/APP/2.10
Author:	A585 Windy Harbour to Skippool Improvement Scheme Project Team, Highways England

Version	Date	Status of Version
Rev 0	October 2018	DCO Submission

CONTENTS

1 INTRODUCTION.....1

2 SCHEDULE OF PLANS INCLUDED IN THIS APPLICATION DOCUMENT2

Page Left Intentionally Blank

1 INTRODUCTION

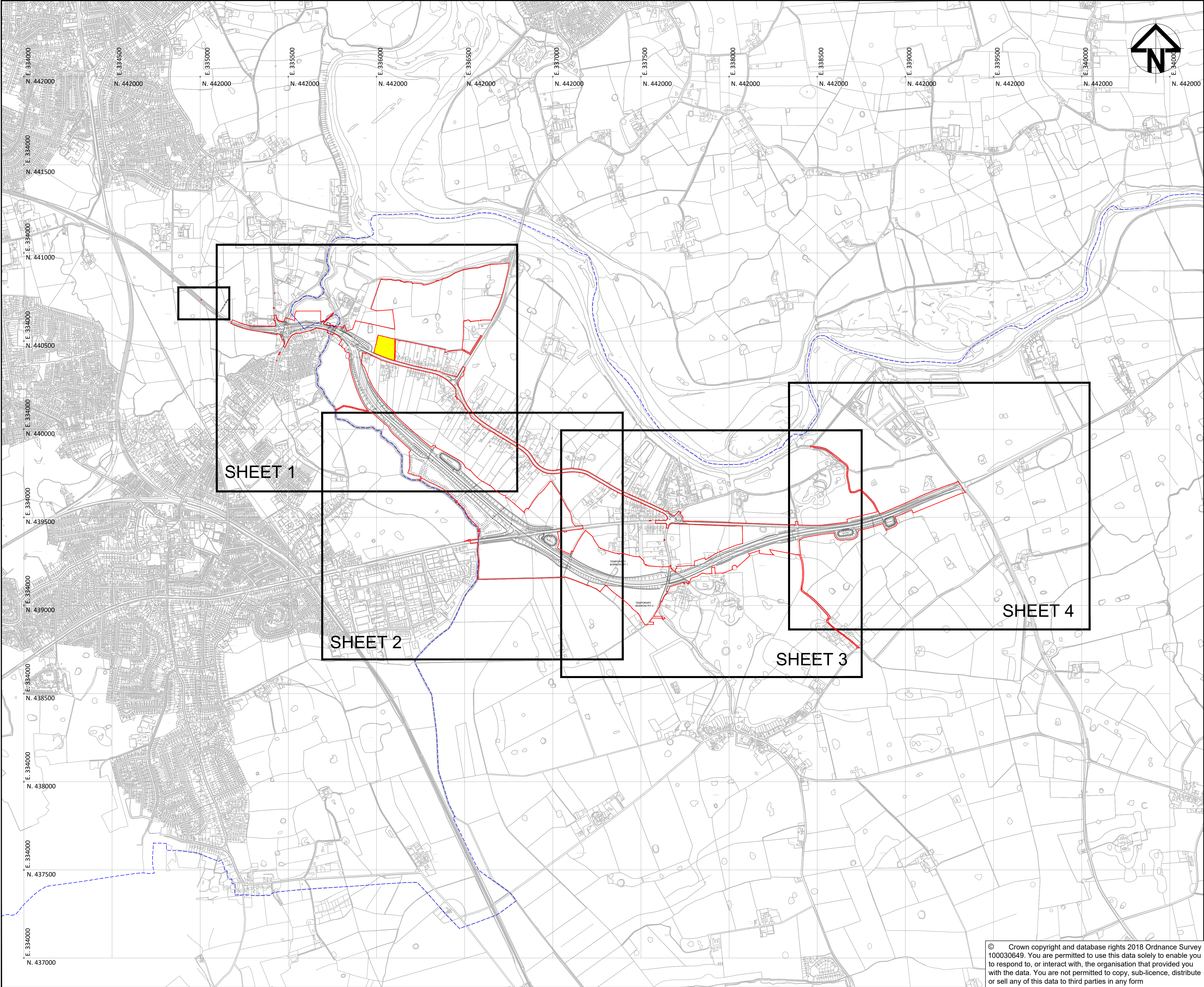
- 1.1 This document is submitted to the Planning Inspectorate on behalf of the Secretary of State in relation to an application made by Highways England ("the Applicant") under section 37 of the Planning Act 2008.
- 1.2 The application is for an order granting development consent ("the development consent order" / "DCO") for the A585 Windy Harbour to Skippool Improvement Scheme ("the Scheme"). The draft DCO is referred to as *A585 Windy Harbour to Skippool Improvement Scheme Development Consent Order 201[]*.
- 1.3 This document comprises part of the suite of application documentation and is included in the application in compliance with Regulation 5(2)(o) and Regulation 5(4) of the Infrastructure Planning (Applications: Prescribed Forms and Procedures) Regulations 2009, which requires:

"5(2)(o) any other plans, drawings and sections necessary to describe the proposals for which development consent is sought, showing details of design, external appearance, and the preferred layout of buildings or structures, drainage, surface water management, means of vehicular and pedestrian access, any car parking to be provided, and means of landscaping."

5(4) "Where a plan comprises three or more separate sheets a key plan must be provided showing the relationship between the different sheets."
- 1.4 As this document is part of the application documentation, it should be read alongside and is informed by the other application documents. In particular, the plans should be read alongside Schedule 9 of the draft DCO (document reference TR010035/APP/3.1).

2 SCHEDULE OF PLANS INCLUDED IN THIS APPLICATION DOCUMENT

Drawing Title	Drawing Number	Revision
Hedgerows and Protected Trees to be Removed Plans – Regulation 5(2)(o) & 5(4) – Key Plan	HE548643-ARC-EGN-SZ_ZZ_000-DR-LE-3112	0
Hedgerows and Protected Trees to be Removed Plans – Regulation 5(2)(o) – Sheet 1 of 4	HE548643-ARC-EGN-SZ_ZZ_000-DR-LE-3113	0
Hedgerows and Protected Trees to be Removed Plans – Regulation 5(2)(o) – Sheet 2 of 4	HE548643-ARC-EGN-SZ_ZZ_000-DR-LE-3114	0
Hedgerows and Protected Trees to be Removed Plans – Regulation 5(2)(o) – Sheet 3 of 4	HE548643-ARC-EGN-SZ_ZZ_000-DR-LE-3115	0
Hedgerows and Protected Trees to be Removed Plans – Regulation 5(2)(o) – Sheet 4 of 4	HE548643-ARC-EGN-SZ_ZZ_000-DR-LE-3116	0

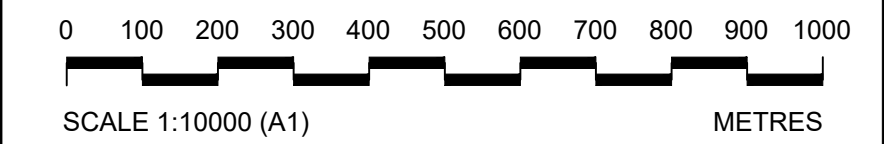



NOTES:

- ALL DIMENSIONS ARE IN METRES UNLESS OTHERWISE STATED
- THESE HEDGEROWS AND PROTECTED TREES TO BE REMOVED PLANS SHOULD BE READ IN CONJUNCTION WITH SCHEDULE 9 OF THE DRAFT DEVELOPMENT CONSENT ORDER (DOCUMENT REFERENCE TR010035/APP/3.1)

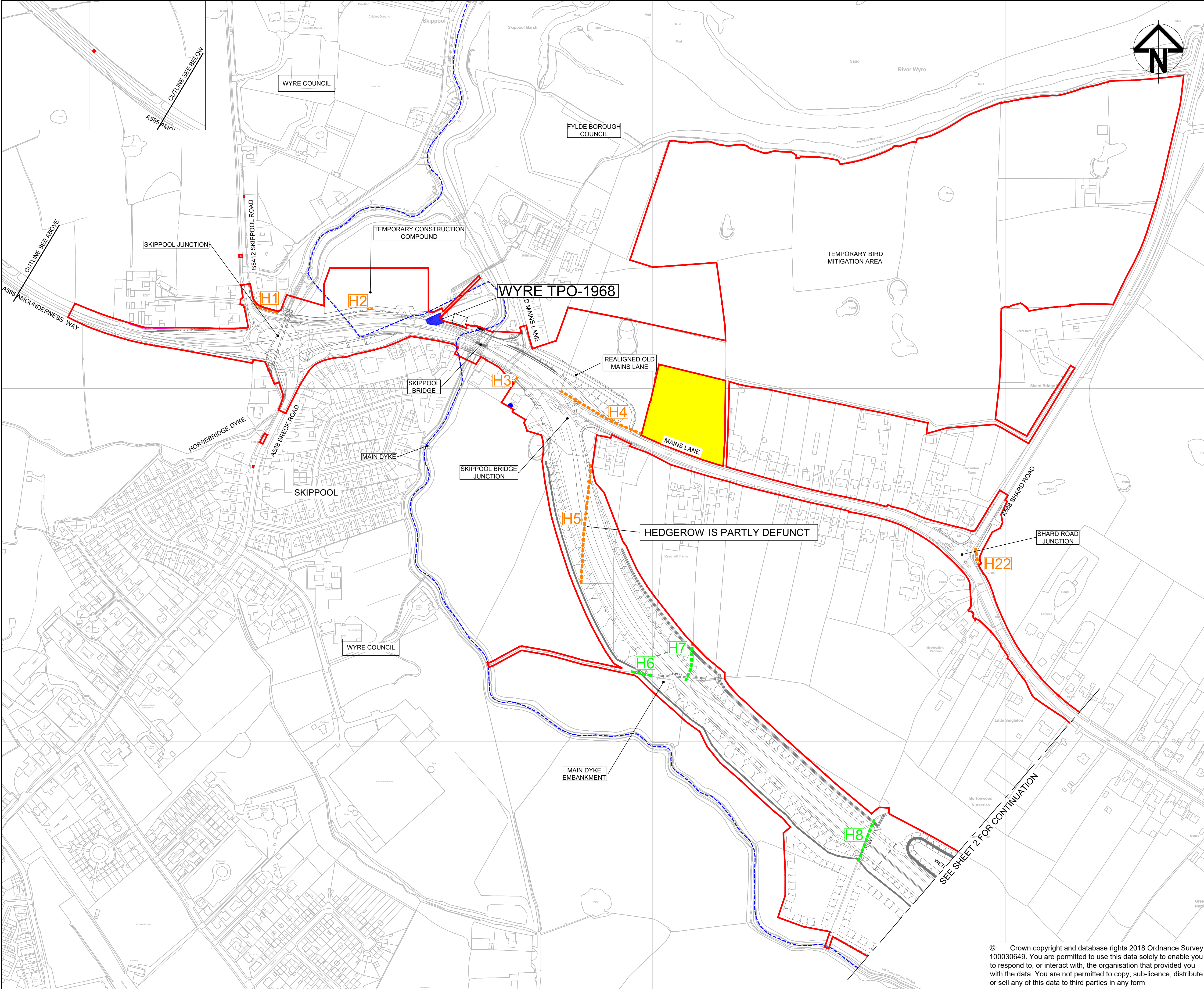
KEY:

- DRAFT ORDER LIMITS
- LOCAL AUTHORITY BOUNDARY
- SCHEME (SHOWN FOR ILLUSTRATIVE PURPOSES)
- AREA NOT INCLUDED WITHIN THE DCO BOUNDARY



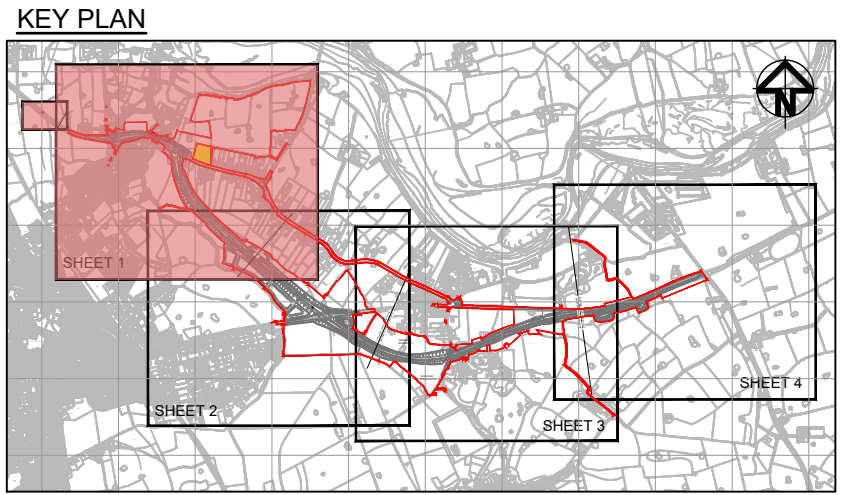
0	S8	OCT18	DCO SUBMISSION	RG	KB	NH
Rev	Status	Rev. Date	Purpose of revision	Drawn	Chk'd	Apprv'd
Client						
						
Project A585 WINDY HARBOUR TO SKIPPOOL IMPROVEMENT SCHEME						
Drawing Title HEDGEROWS AND PROTECTED TREES TO BE REMOVED PLANS REGULATIONS 5(2)(o) & 5(4) KEY PLAN						
Status S8 - DCO SUBMISSION				Revision 0		
Scale 1 : 10000		Date OCT 2018				
Drawn By R.GRUBB						
Checked By K.BURROWS						
Approved By N.HENDERSON						
PINS No. TR010035		Original Size		A1		
Drawing number HE PN Originator Volume Location Type Risk Number						
HE548643-ARC-EGN-SZ_ZZ_000-DR-LE-3112						

© Crown copyright and database rights 2018 Ordnance Survey 100030649. You are permitted to use this data solely to enable you to respond to, or interact with, the organisation that provided you with the data. You are not permitted to copy, sub-licence, distribute or sell any of this data to third parties in any form



- NOTES:
- ALL DIMENSIONS ARE IN METRES UNLESS OTHERWISE STATED
 - THESE HEDGEROWS AND PROTECTED TREES TO BE REMOVED PLANS SHOULD BE READ IN CONJUNCTION WITH SCHEDULE 9 OF THE DRAFT DEVELOPMENT CONSENT ORDER (DOCUMENT REFERENCE TR010035/APP/3.1)

- KEY:
- DRAFT ORDER LIMITS
 - LOCAL AUTHORITY BOUNDARY
 - SCHEME (SHOWN FOR ILLUSTRATIVE PURPOSES)
 - AREA NOT INCLUDED WITHIN THE DCO BOUNDARY
 - TREE PRESERVATION ORDERS (TPOs) TO BE RETAINED
 - TPOs TO BE REMOVED
 - TPOs NO LONGER PRESENT BUT STILL ON REGISTER
 - HEDGEROWS TO BE REMOVED
 - IMPORTANT HEDGEROWS TO BE REMOVED



SCALE 1:2500(A1) METRES

0	S8	OCT18	DCO SUBMISSION	RG	KB	NH
Rev	Status	Rev. Date	Purpose of revision	Drawn	Chk'd	Apprv'd

Client

Project A585 WINDY HARBOUR TO SKIPPOOL IMPROVEMENT SCHEME

Drawing Title

HEDGEROWS AND PROTECTED TREES TO BE REMOVED PLANS REGULATIONS 5(2)(o) SHEET 1 OF 4

Status S8 - DCO SUBMISSION Revision 0

Scale 1 : 2500 Date OCT 2018

Drawn By R.GRUBB

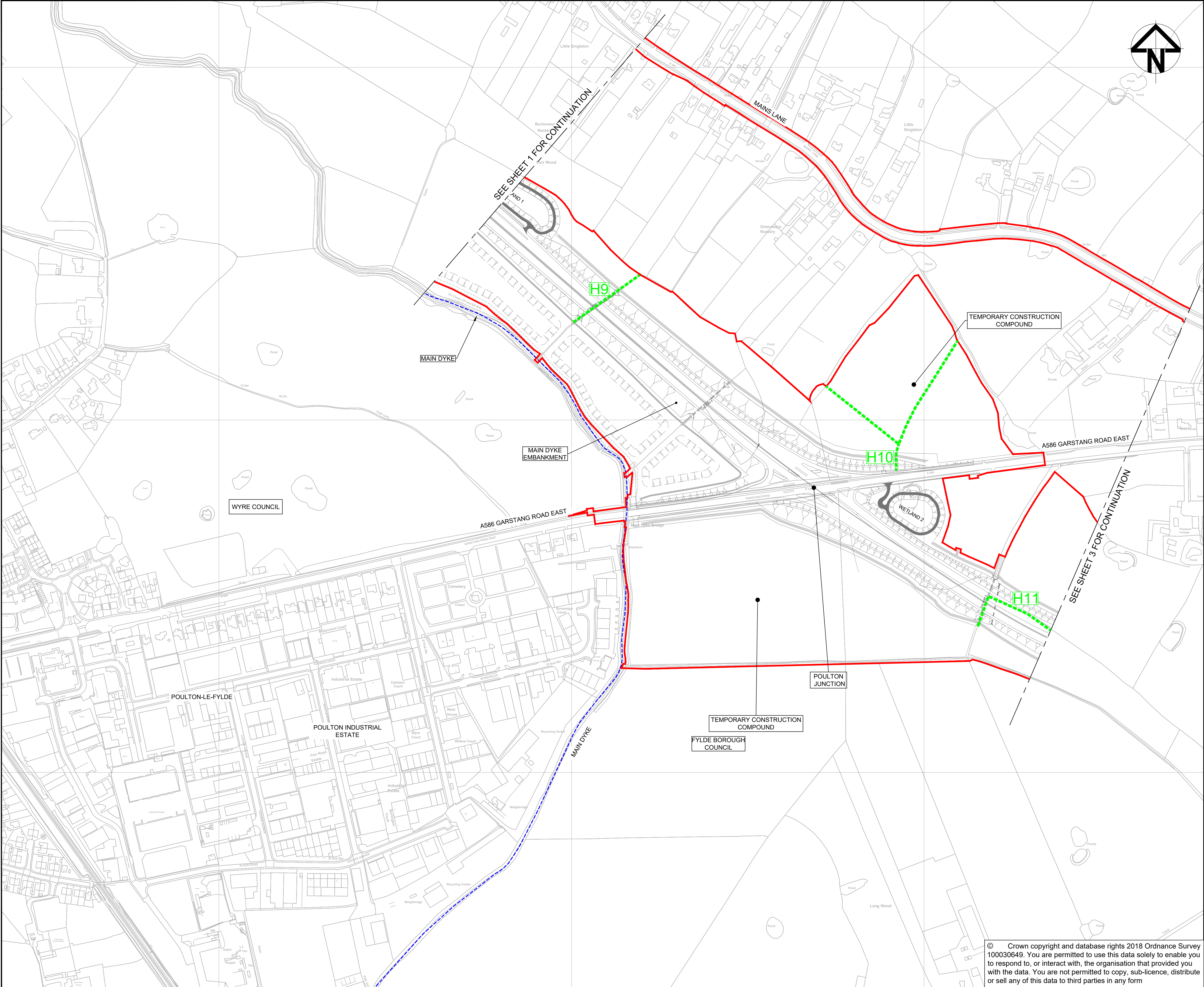
Checked By K.BURROWS

Approved By N.HENDERSON

© Crown copyright and database rights 2018 Ordnance Survey 100030649. You are permitted to use this data solely to enable you to respond to, or interact with, the organisation that provided you with the data. You are not permitted to copy, sub-licence, distribute or sell any of this data to third parties in any form

PINS No. TR010035 Original Size A1

Drawing number HE-PN | Originator | Volume | Location | Type | Risk | Number HE548643-ARC-EGN-SZ_ZZ_000-DR-LE-3113



NOTES:

- ALL DIMENSIONS ARE IN METRES UNLESS OTHERWISE STATED
- THESE HEDGEROWS AND PROTECTED TREES TO BE REMOVED PLANS SHOULD BE READ IN CONJUNCTION WITH SCHEDULE 9 OF THE DRAFT DEVELOPMENT CONSENT ORDER (DOCUMENT REFERENCE TR010035/APP/3.1)

KEY:

- DRAFT ORDER LIMITS
- LOCAL AUTHORITY BOUNDARY
- SCHEME (SHOWN FOR ILLUSTRATIVE PURPOSES)
- AREA NOT INCLUDED WITHIN THE DCO BOUNDARY
- TREE PRESERVATION ORDERS (TPOs) TO BE RETAINED
- TPOs TO BE REMOVED
- TPOs NO LONGER PRESENT BUT STILL ON REGISTER
- HEDGEROWS TO BE REMOVED
- IMPORTANT HEDGEROWS TO BE REMOVED

KEY PLAN

0 50 100 150 200
SCALE 1:2500(A1) METRES

0	S8	OCT18	DCO SUBMISSION	RG	KB	NH
Rev	Status	Rev. Date	Purpose of revision	Drawn	Chk'd	Apprv'd

Client

highways england

Project A585 WINDY HARBOUR TO SKIPPOOL IMPROVEMENT SCHEME

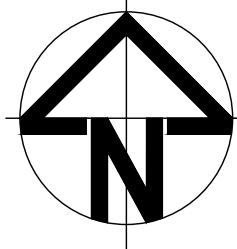
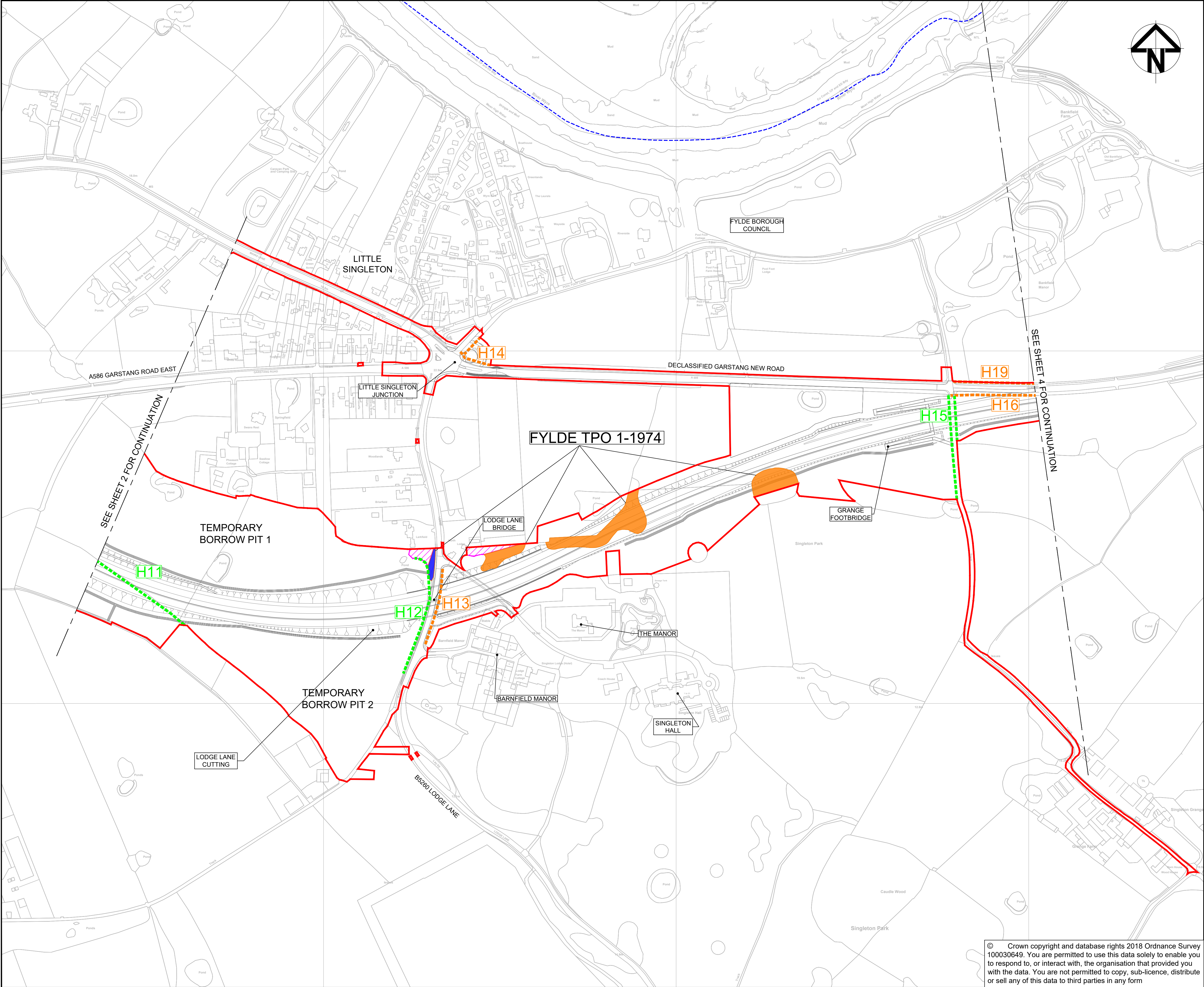
Drawing Title

HEDGEROWS AND PROTECTED TREES TO BE REMOVED PLANS REGULATIONS 5(2)(o) SHEET 2 OF 4

Status	S8 - DCO SUBMISSION	Revision	0
Scale	1 : 2500	Date	OCT 2018
Drawn By	R.GRUBB		
Checked By	K.BURROWS		
Approved By	N.HENDERSON		
PINS No.	TR010035	Original Size	A1

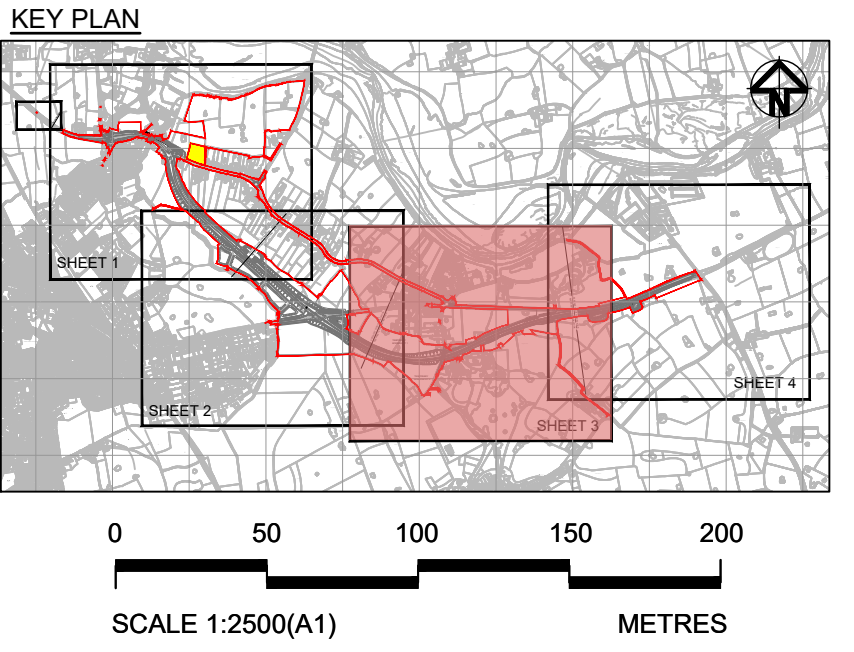
Drawing number HE PN | Originator | Volume | Location | Type | Risk | Number
HE548643-ARC-EGN-SZ_ZZ_000-DR-LE-3114


© Crown copyright and database rights 2018 Ordnance Survey 100030649. You are permitted to use this data solely to enable you to respond to, or interact with, the organisation that provided you with the data. You are not permitted to copy, sub-licence, distribute or sell any of this data to third parties in any form



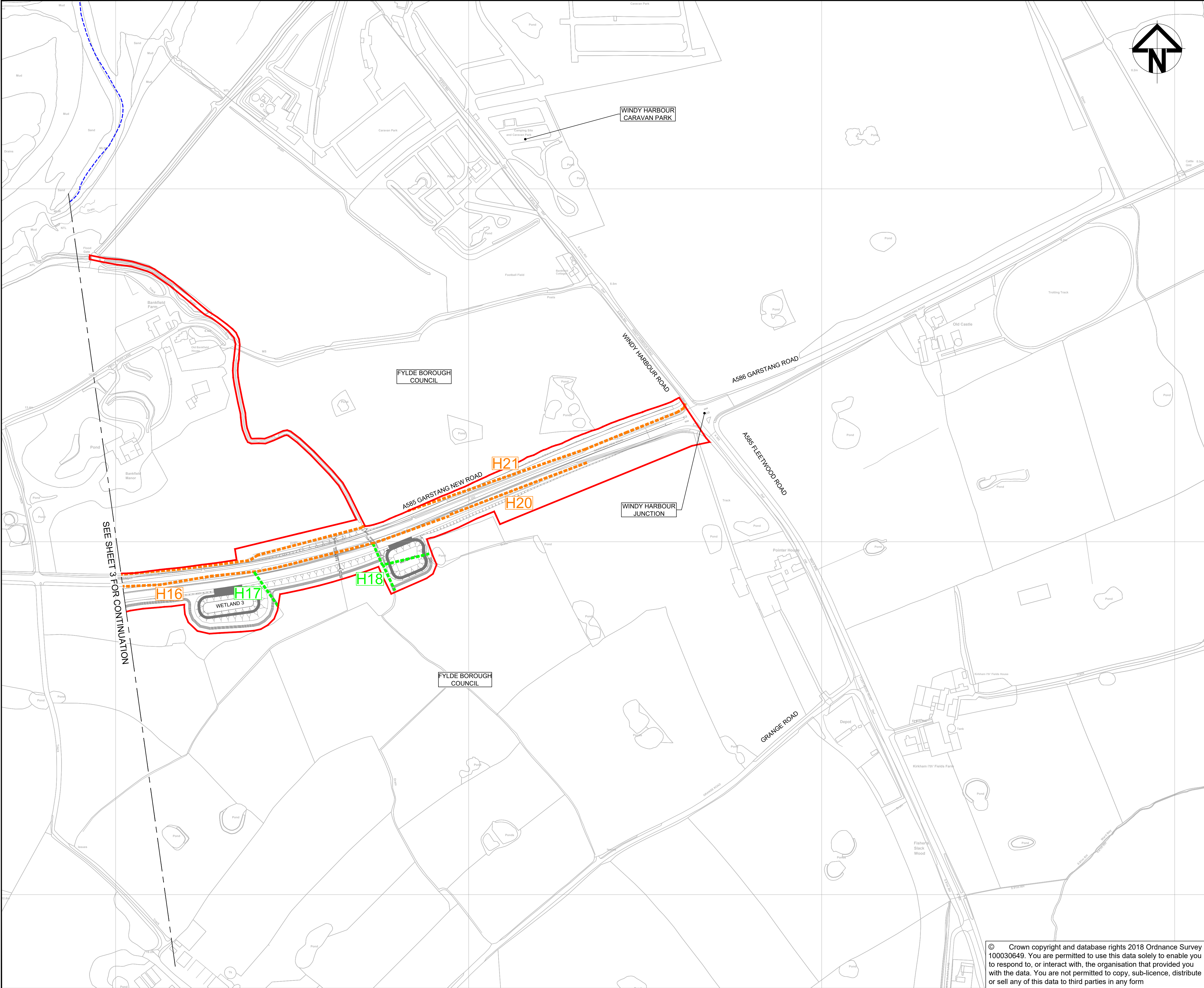
- NOTES:**
- ALL DIMENSIONS ARE IN METRES UNLESS OTHERWISE STATED
 - THESE HEDGEROWS AND PROTECTED TREES TO BE REMOVED PLANS SHOULD BE READ IN CONJUNCTION WITH SCHEDULE 9 OF THE DRAFT DEVELOPMENT CONSENT ORDER (DOCUMENT REFERENCE TR010035/APP/3.1)

- KEY:**
- DRAFT ORDER LIMITS
 - LOCAL AUTHORITY BOUNDARY
 - SCHEME (SHOWN FOR ILLUSTRATIVE PURPOSES)
 - AREA NOT INCLUDED WITHIN THE DCO BOUNDARY
 - TREE PRESERVATION ORDERS (TPOs) TO BE RETAINED
 - TPOs TO BE REMOVED
 - TPOs NO LONGER PRESENT BUT STILL ON REGISTER
 - HEDGEROWS TO BE REMOVED
 - IMPORTANT HEDGEROWS TO BE REMOVED



0	S8	OCT18	DCO SUBMISSION		RG	KB	NH	
Rev	Status	Rev. Date	Purpose of revision		Drawn	Chk'd	Appr'd	
Client								
<div> highways england</div>								
Project A585 WINDY HARBOUR TO SKIPPOOL IMPROVEMENT SCHEME								
Drawing Title								
HEDGEROWS AND PROTECTED TREES TO BE REMOVED PLANS REGULATIONS 5(2)(o) SHEET 3 OF 4								
Status S8 - DCO SUBMISSION					Revision 0			
Scale		1 : 2500			Date OCT 2018			
Drawn By		R.GRUBB						
Checked By		K.BURROWS						
Approved By		N.HENDERSON						
PINS No.		TR010035			Original Size		A1	
Drawing number		HE/PIN	Originator	Volume	Location	Type	Risk	Number
		HE548643-ARC-EGN-SZ_ZZ_000-DR-LE-3115						

© Crown copyright and database rights 2018 Ordnance Survey 100030649. You are permitted to use this data solely to enable you to respond to, or interact with, the organisation that provided you with the data. You are not permitted to copy, sub-licence, distribute or sell any of this data to third parties in any form



NOTES:

- ALL DIMENSIONS ARE IN METRES UNLESS OTHERWISE STATED
- THESE HEDGEROWS AND PROTECTED TREES TO BE REMOVED PLANS SHOULD BE READ IN CONJUNCTION WITH SCHEDULE 9 OF THE DRAFT DEVELOPMENT CONSENT ORDER (DOCUMENT REFERENCE TR010035/APP/3.1)

KEY:

- DRAFT ORDER LIMITS
- LOCAL AUTHORITY BOUNDARY
- SCHEME (SHOWN FOR ILLUSTRATIVE PURPOSES)
- AREA NOT INCLUDED WITHIN THE DCO BOUNDARY
- TREE PRESERVATION ORDERS (TPOs) TO BE RETAINED
- TPOs TO BE REMOVED
- TPOs NO LONGER PRESENT BUT STILL ON REGISTER
- HEDGEROWS TO BE REMOVED
- IMPORTANT HEDGEROWS TO BE REMOVED

KEY PLAN

0 50 100 150 200
SCALE 1:2500(A1) METRES

0	S8	OCT18	DCO SUBMISSION	RG	KB	NH
Rev	Status	Rev. Date	Purpose of revision	Drawn	Chk'd	Apprv'd

Client

**highways
england**

Project **A585 WINDY HARBOUR TO SKIPPOOL IMPROVEMENT SCHEME**

Drawing Title
HEDGEROWS AND PROTECTED TREES TO BE REMOVED PLANS REGULATIONS 5(2)(o) SHEET 4 OF 4

Status	S8 - DCO SUBMISSION	Revision	0
Scale	1 : 2500	Date	OCT 2018
Drawn By	R.GRUBB		
Checked By	K.BURROWS		
Approved By	N.HENDERSON		
PINS No.	TR010035	Original Size	A1

Drawing number HE PN | Originator | Volume | Location | Type | Role | Number
HE548643-ARC-EGN-SZ_ZZ_000-DR-LE-3116

© Crown copyright and database rights 2018 Ordnance Survey 100030649. You are permitted to use this data solely to enable you to respond to, or interact with, the organisation that provided you with the data. You are not permitted to copy, sub-licence, distribute or sell any of this data to third parties in any form